



QUICK START GUIDE

SETTING UP YOUR DECK SPRAYER

190445



1. Assemble Hose To Tank

IMPORTANT: Do not attempt to heat or alter hose, hose nut, or barb prior to assembly.

1. Align hose barb tabs, push hose barb into tank until it stops (**See Figure A**).
2. Slide hose nut into place and turn clockwise to tighten. (**See Figure B**).

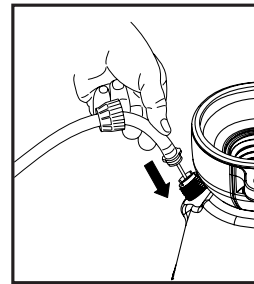


Figure A

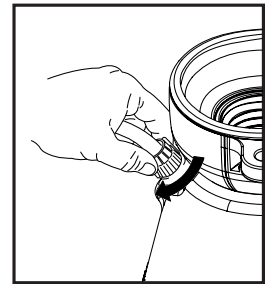


Figure B

NOTE: Do not use tools to tighten hose nut.

2. Assemble Wand & Nozzle

Place nozzle onto the end of the wand assembly and tighten securely. (**See Figure C**)

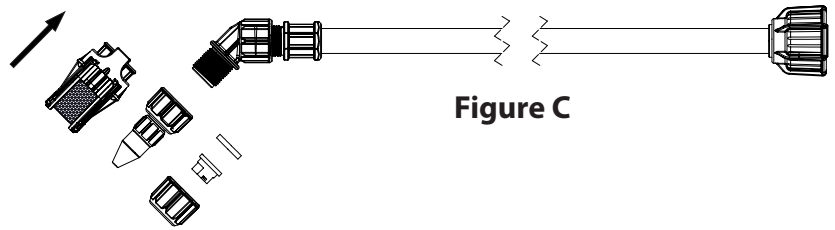


Figure C

Configuration for
nozzle tip sprayers

3. Assemble Shut-off to Wand

Screw on Wand Assembly to end of Shut-off and tighten securely. (**See Figure D**)

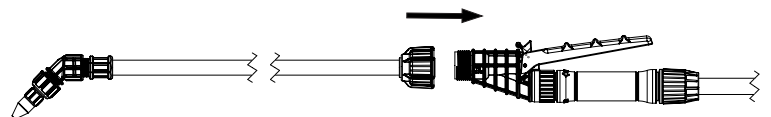


Figure D

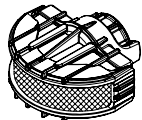
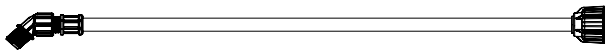
PARTS INCLUDED WITH YOUR
DECK SPRAYER
190445



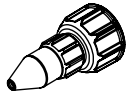
183173
SHUT-OFF ASSEMBLY



182112
21" SS WAND ASSEMBLY



182187
HIGH FOAM
NOZZLE



181822
ADJUSTABLE
NOZZLE POLY



180097
NOZZLE TIP
HIGH VOLUME
(RED)



180168
NOZZLE TIP
LOW VOLUME
(YELLOW)



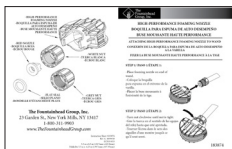
181812
NOZZLE FLAT SEAL



181804
NOZZLE CAP NUT



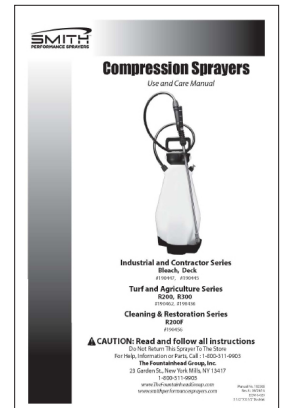
181080
CARRYING STRAP



183874
FOAMING NOZZLE
CARD



182618
WARRANTY CARD



183368
MANUAL